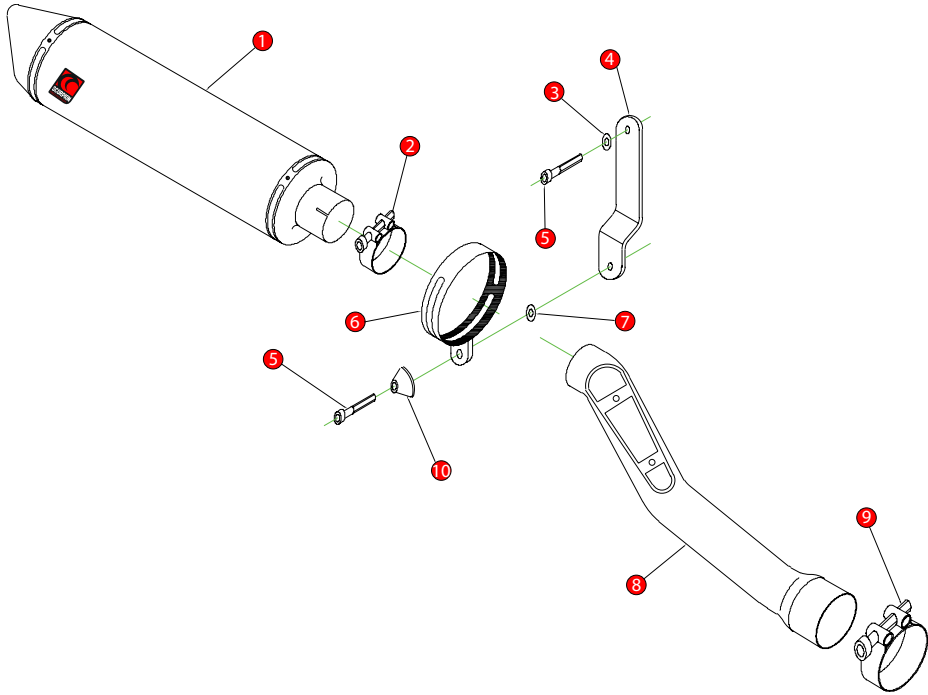


Box: PLOCK 1

BIKE	HONDA CB 600 HORNET	PART NO.	EHA - 63
YEAR	1998 - 2002	FIT KITS	OVAL Z039.11033 // ROUND Z039.10033
NOTES	Seat Cowl Will Require Removing to Enable Fitment	FEATURES	DB KILLER Z038.10120



- | | |
|----------------------------------------------------------|-----------------------------------------|
| 1 400mm Silencer ESC 51 | 8 Connecting Pipe CP 102 |
| 2 51-55mm Band Clamp (Z016.10002) | 9 43 -47mm Band Clamp (Z016.10008) |
| 3 M8 x 17 washer (Z017.10831) | 10 Aluminium Bolt Finisher (Z026.20068) |
| 4 Mounting bracket (Z015.10004) | |
| 5 2 x M8 x 16mm Cap head bolts (Z017.10808) | |
| 6 Composite Silencer Strap (R-Z038.10090) (O-Z038.10088) | |
| 7 M8 x 25mm Washer (Z017.10825) | |

E-MARK ROUND	SCD8-RS e4 2035
E-MARK OVAL	SCD8-OS e4 2072
ISSUE NO.	8
DATE	10/03/09
AUTHORISED	S.Northrop
CHECKED	

NOTE: ENSURE SCORPION SYSTEM IS CLEAR OF MOVING PARTS AND ALL ORIGINAL FUNCTIONS WORK CORRECTLY.

A) Remove original exhaust from bike, taking care to keep all original components in a safe place.

B) Refit Scorpion exhaust as per line diagram above.

C) When fitted take bike for a short ride to ensure all functions are correct.

D) When bike & exhaust are cool enough check all nuts and bolts are still secure.