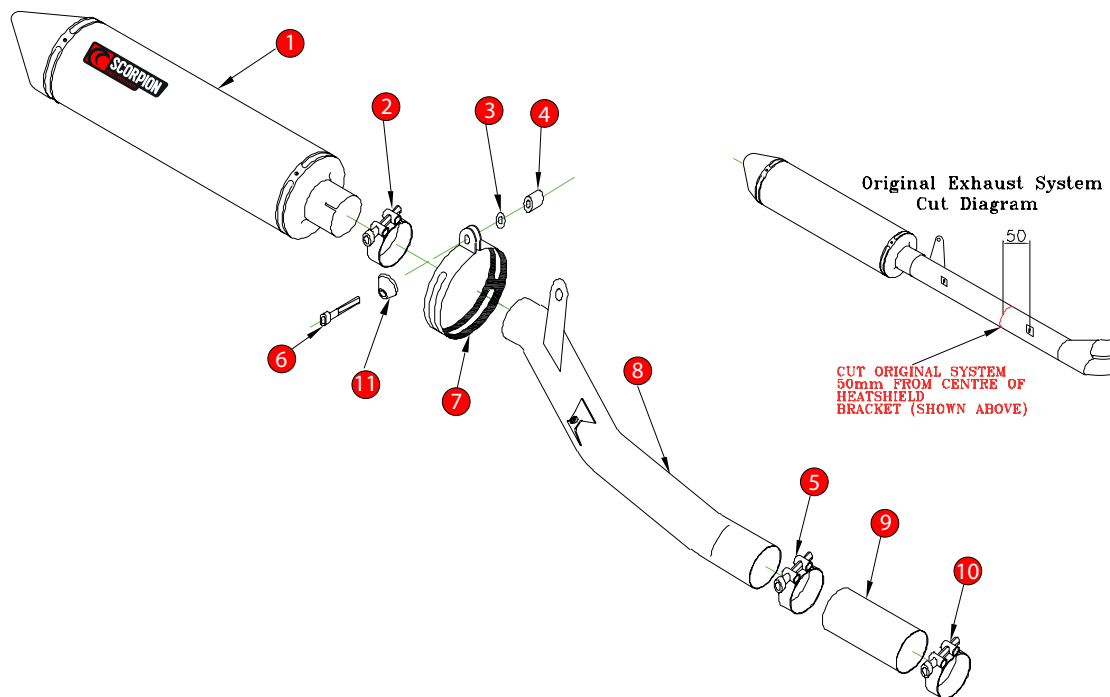


Box: PLOCK 2

BIKE	SUZUKI DL 650 V - STROM	PART NO.	SI - 81
YEAR	2004 - 2006	FIT KITS	OVAL Z039.11084
NOTES		FEATURES	DB KILLER Z038.10120



- |  |   |
|--|---|
| 1 450mm Silencer ESC 94                | 8 Connecting Pipe CP 266                |
| 2 51-55mm Band Clamp (Z016.10002)      | 9 Re-connecting Sleeve CP328            |
| 3 2 x M8 x 17mm Washers (Z017.10831)   | 10 43-47mm Band Clamp (Z016.10008)      |
| 4 45mm Aluminium Spacer (Z026.10011)   | 11 Aluminium Bolt Finisher (Z026.20068) |
| 5 47-51mm Band Clamp (Z016.10003)      | 12 Photo fitting instructions           |
| 6 M8 x 90mm Cap Head Bolt (Z017.10085) |   |
| 7 Composite Strap (Z038.10088)         |   |

E-MARK OVAL	SCDB-UC <a href="#">[e4]</a> 2106
ISSUE NO.	10
DATE	01/09/08
AUTHORISED	S.Northrop
CHECKED	

**NOTE:** ENSURE SCORPION SYSTEM IS CLEAR OF MOVING PARTS AND ALL ORIGINAL FUNCTIONS WORK CORRECTLY.

A) Remove original exhaust from bike, taking care to keep all original components in a safe place.

B) Refit Scorpion exhaust as per line diagram above.

C) When fitted take bike for a short ride to ensure all functions are correct.

D) When bike & exhaust are cool enough check all nuts and bolts are still secure.