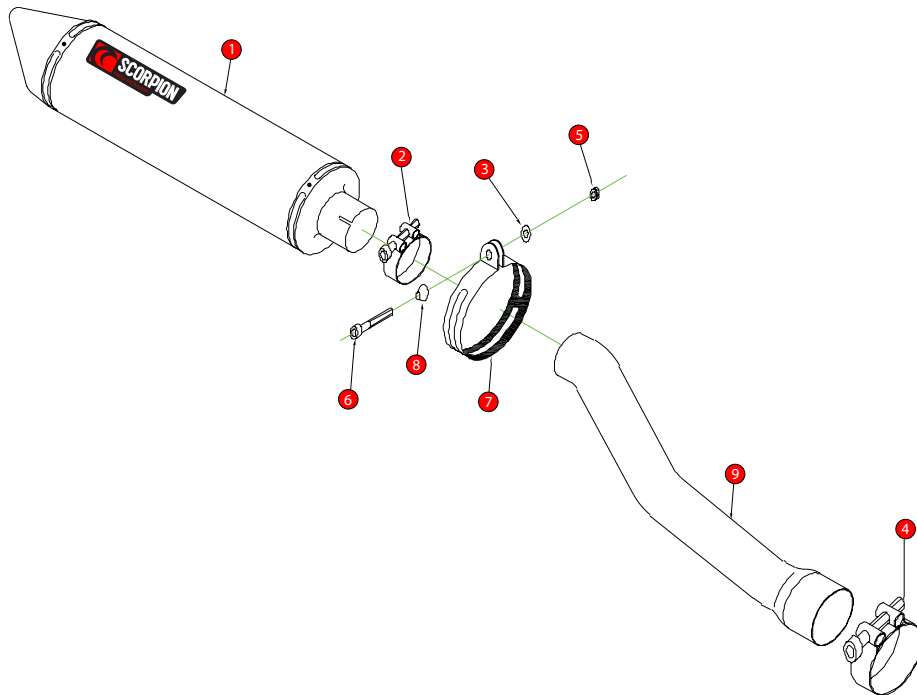


Box: PLOCK 2

| | | | |
|-------|--|----------|-------------------------------------|
| BIKE | YAMAHA YZF 1000 R1 | PART NO. | EYA - 65 |
| YEAR | 2002 - 2003 | FIT KITS | OVAL Z039.11128 // ROUND Z039.10128 |
| NOTES | Where not supplied use original fittings | FEATURES | DB KILLER Z038.10120 |



| | |
|--|--|
| 1 450mm Silencer ESC 50 | 8 Aluminium Bolt Finisher (Z026.20068) |
| 2 51-55mm Band Clamp (Z016.10002) | 9 Connecting Pipe CP 86 |
| 3 2 x M8 x 17mm Washers (Z017.10831) | |
| 4 59-63mm Band Clamp (Z016.10001) | |
| 5 M8 Nylock Nut (Z017.10062) | |
| 6 M8 x 40mm Cap Head Bolt (Z017.10076) | |
| 7 Composite Strap (R-Z038.10089)(O-Z038.10088) | |

| | |
|--------------|-----------------------------------|
| E-MARK ROUND | SCDB-RS [e4] 2035 |
| E-MARK OVAL | SCDB-OS [e4] 2072 |
| ISSUE NO. | 11 |
| DATE | 17/12/08 |
| AUTHORISED | S.Northrop |
| CHECKED | |

NOTE: ENSURE SCORPION SYSTEM IS CLEAR OF MOVING PARTS AND ALL ORIGINAL FUNCTIONS WORK CORRECTLY.

A) Remove original exhaust from bike, taking care to keep all original components in a safe place.

B) Refit Scorpion exhaust as per line diagram above.

C) When fitted take bike for a short ride to ensure all functions are correct.

D) When bike & exhaust are cool enough check all nuts and bolts are still secure.