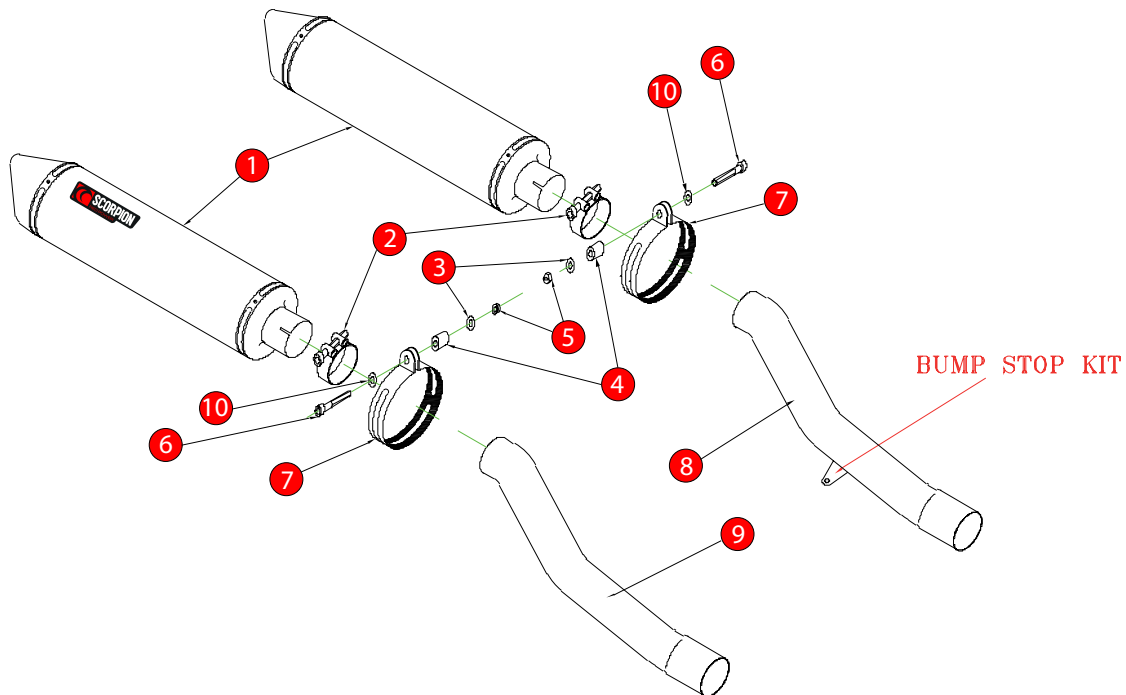


Box: PLOCK 1

BIKE	KAWASAKI ZZR 600 D	PART NO.	EKA - 51
YEAR	1990 - 1998	FIT KITS	OVAL Z039.11057 // ROUND Z039.10057
NOTES		FEATURES	DB KILLER Z038.10120



- | | |
|---|--|
| 1 2 x 450mm Silencers ESC 50 | 8 Connecting Pipe CP 21 |
| 2 2 x 51 - 55mm Band Clamps (Z016.10002) | 9 Connecting Pipe CP 22 |
| 3 2 x M8 x 17mm Washers (Z017.10831) | 10 2 x Aluminium Bolt Finishers (Z026.20068) |
| 4 2 x 10mm Aluminium Spacers (Z026.10004) | 11 Bump Stop Kit (Z017.10010) |
| 5 2 x M8 Nyloc Nuts (Z017.10062) | |
| 6 2 x M8 x 75mm Cap Head Bolts (Z017.10083) | |
| 7 2 x Composite Straps (R-Z038.10090)(O-Z038.10088) | |

E-MARK ROUND	BSAU 193a 1990/t3
E-MARK OVAL	BSAU 193a 1990/t3
ISSUE NO.	7
DATE	10/10/16
AUTHORISED	S.Jackson
CHECKED	

NOTE: ENSURE SCORPION SYSTEM IS CLEAR OF MOVING PARTS AND ALL ORIGINAL FUNCTIONS WORK CORRECTLY.

A) Remove original exhaust from bike, taking care to keep all original components in a safe place.

B) Refit Scorpion exhaust as per line diagram above.

C) When fitted take bike for a short ride to ensure all functions are correct.

D) When bike & exhaust are cool enough check all nuts and bolts are still secure.