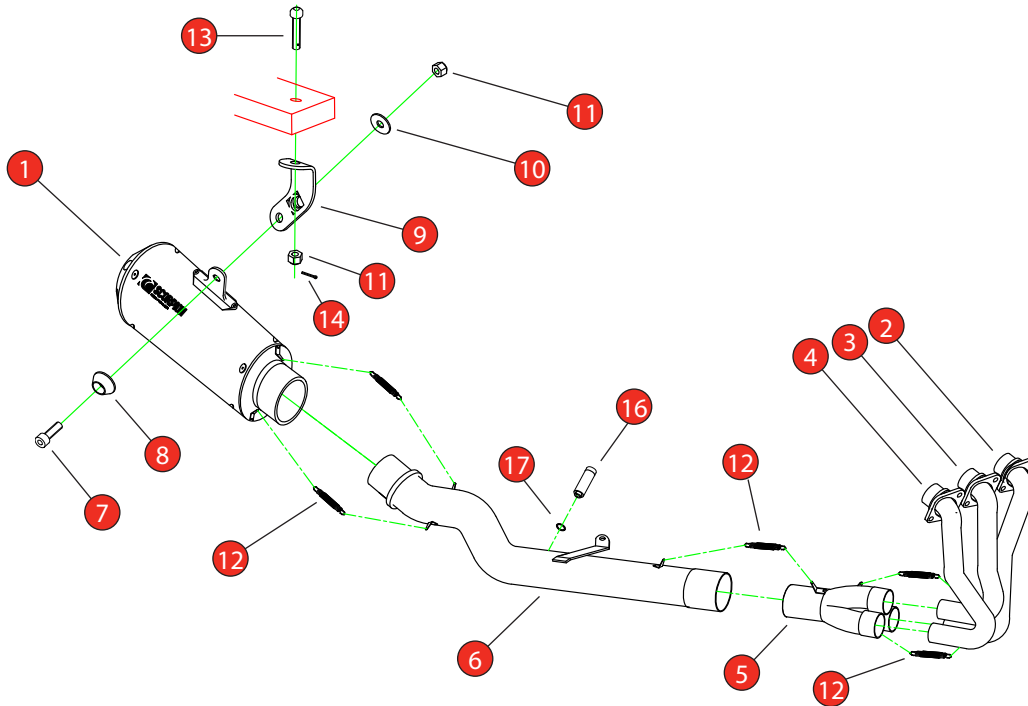


Bike	Yamaha MT-09 (Inc SP)	Part No.	PYA-130-SYS
Year	2024-Current	Fit Kit	Z039.10742
Notes	Where not supplied use original fittings.	dB Killer	SCEXDBK47 (TYPE PB)

Estimated Fitting Time: 60 Minutes



NO.	PART NO.	DESCRIPTION	QTY
1	PSC459	Red Power Silencer	1
2	CP1128	L/H Header Pipe	1
3	CP1129	Centre Header Pipe	1
4	CP1130	R/H Header Pipe	1
5	CP1131	Collector	1
6	CP1132	Connecting Pipe	1
Fit Kit - Z039.10742			
7	Z017.10073	M8 x 25mm Cap Head Bolt	1
8	Z026.20068B	Alloy Bolt Finisher Anodised Black	1
9	Z007.31719	Mounting Bracket	1
10	Z017.10825	M8 x 25mm Washer	1
11	Z017.10062	M8 Nyloc Nut	2
12	Z028.10030	Rubber Coated Spring	5
13	Z017.10007	M8 x 45mm Button Hd Screw c/w Split Pin Hole	1
14	Z017.10008	3mm Dia. Split Pin	1
15	Z024.11134	Lambda Extension Cable	2
16	Z026.20185	M12 Lambda Catalyst	1
17	Z017.10728	M12 Copper Washer	1

CLASSIFICATION	Closed Circuit Product
HOMOLOGATED	NO
DATE	22/01/2025
ISSUE	03
AUTHORISED	G. O'Shea

NOTE: ENSURE SCORPION SYSTEM IS CLEAR OF MOVING PARTS AND ALL ORIGINAL FUNCTIONS WORK CORRECTLY.

Bike	Yamaha MT-09 (Inc SP)	Part No.	PYA-130-SYS
Year	2024-Current	Fit Kits	Z039.10742
Notes	Where not supplied use original fittings.	dB Killer	SCEXDBK47 (TYPE PB)



NOTE: Instructions show fitting of Serket Parallel silencer, however Red Power fits the same way.

A) Remove both lambda sensors from the original exhaust

B) Remove the header nuts.
NOTE: We recommend removing the radiator support bracket to give you more room to access the header nuts.



C) On the left side of the bike, in front of the side stand, remove the exhaust mounting bolt.

D) On the right side of the bike, support the weight of the exhaust, then remove the exhaust mounting bolt.

E) Carefully remove the original exhaust from the bike.



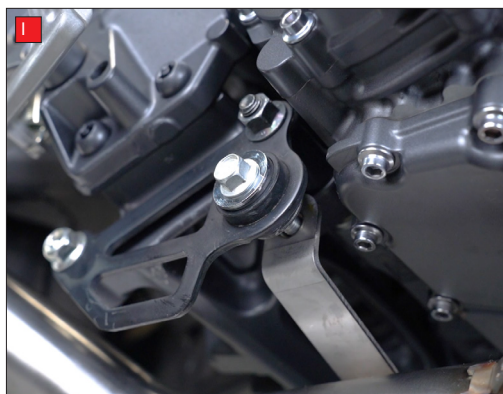
F) Install the Scorpion header pipes, leave the header nuts slightly loose at this point to allow adjustment once the rest of the system is installed. You will fully tighten in a later step.

G) Slide the collector onto the 3 header pipes. Note the position of the spring hoops.

H) Slide the connecting pipe onto the collector.



Bike	Yamaha MT-09 (Inc SP)	Part No.	PYA-130-SYS
Year	2024-Current	Fit Kits	Z039.10742
Notes	Where not supplied use original fittings.	dB Killer	SCEXDBK47 (TYPE PB)



I) Align the bracket with the mounting point on the bike. Use the original mounting bolt to secure in place but leave slightly loose at this point to allow for some adjustment later.

J) On the right side of the bike, remove the split pin from the rear foot rest.

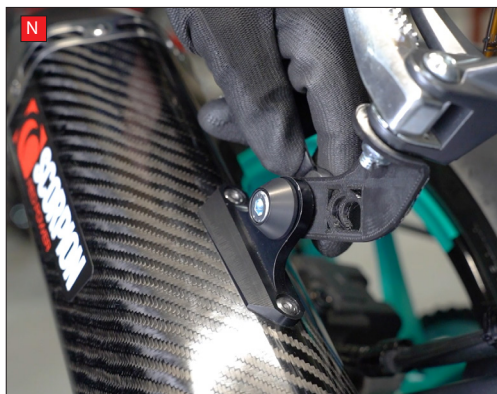
K) Replace the spindle with the supplied button head bolt.



L) Attach the Scorpion mounting bracket with the supplied nut. Do not fully tighten, you will do that in a later step.

M) Slide the Scorpion silencer onto the connecting pipe and align with the mounting bracket.

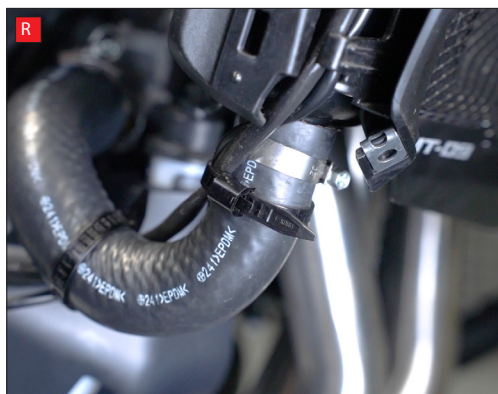
N) Secure in place with the supplied mounting hardware. Do not fully tighten at this point, you will do that in a later step.



O & P) On the right side of the bike, remove the 2 bolts that hold the front/side plastic panel on.



Bike	Yamaha MT-09 (Inc SP)	Part No.	PYA-130-SYS
Year	2024-Current	Fit Kits	Z039.10742
Notes	Where not supplied use original fittings.	dB Killer	SCEXDBK47 (TYPE PB)



Q) Carefully un-clip and remove the plastic panel.

R) Remove the cable ties holding the lambda sensor cable to the coolant hose. Save them for later as you will re-use them.

S) Disconnect the wiring plug for the Lambda sensor and remove the sensor from the bike.

T) Connect one of the supplied extension harnesses to the Lambda plug and run safely down the side of the engine to the new Lambda sensor location.

U) Screw the M12 Lambda Catalyst and copper washer into the boss on the Scorpion link pipe by hand. Re-install the sensor into the rear sensor boss on the connecting pipe. Fully tighten.

V) Feed the sensor plug between the engine and the frame, connect the plug to the extension harness. Make sure the cable is routed safely out of the way of hot and/or moving parts.

W) Use the original cable ties to secure the cable to the coolant hose as it was originally.

X) Re-attach the plastic panel and secure in place with the original bolts.



Bike	Yamaha MT-09 (Inc SP)	Part No.	PYA-130-SYS
Year	2024-Current	Fit Kits	Z039.10742
Notes	Where not supplied use original fittings.	dB Killer	SCEXDBK47 (TYPE PB)

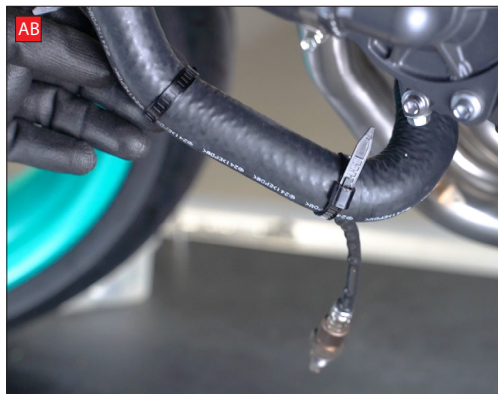


Y & Z) On the left side of the bike, remove the 2 bolts that hold the front/side plastic panel on.

AA) Carefully un-clip and remove the plastic panel.

AB) Remove the cable ties holding the lambda sensor cable to the coolant hose.

AC) Disconnect the lambda sensor and remove from the bike.



AD) Connect the extension harness to the plug and run behind the frame and engine mount, down towards the gear selector area with the breather hoses.

AE) Install the sensor into the front sensor boss on the connecting pipe. Fully tighten.

AF) Connect the plug to the extension harness.



Bike	Yamaha MT-09 (Inc SP)	Part No.	PYA-130-SYS
Year	2024-Current	Fit Kits	Z039.10742
Notes	Where not supplied use original fittings.	dB Killer	SCEXDBK47 (TYPE PB)



AG) Re-attach the plastic panel and secure in place with the original bolts.

AH) Attach springs between each of the spring hoops along the system.

AI) Make sure the system is aligned correctly, then fully tighten the header nuts.

AJ) Fully tighten the connecting pipe mounting bolt.



AK) Fully tighten the bolt/nut going through the rear foot rest. Do not overtighten. Ensure that the foot rest still operates correctly once tight. If it's difficult to move, loosen the nut slightly until it frees up.

AL) Put the split pin through the hole and bend the end so that it cannot come back out.

AM) Fully tighten the silencer to mounting bracket hardware.



AN) Re-attach the radiator support bracket.

When fitted take bike for a short ride to ensure all functions are correct. When bike & exhaust are cool enough check all nuts and bolts are still secure.



Bike	Yamaha MT-09 (Inc SP)	Part No.	PYA-130-SYS
Year	2024-Current	Fit Kits	Z039.10742
Notes	Where not supplied use original fittings.	dB Killer	SCEXDBK47 (TYPE PB)



Thank you for purchasing your Scorpion Silencer.

Care of your exhaust: Please refrain from cleaning silencer with heavy solvents or abrasives!

Vielen Dank Für den kauf eines Scorpion Schalldampfers! Pflegehinweis: Bitte verwenden Sie niemals Scheuermittel oder aggressive Reiniger zur Pflege Ihres Auspuffes!

Merci d'avoir choisi un echappement Scorpion.

Entretien de votre silencieux: Ne pas utiliser de solvants ou de produits abrasifs!

Muchas gracias por adquirir un Silencioso Scorpion. Le recomendamos no limpiar el silencioso con productos abrasivos o aquellos que contengan disolventes.



STAY CONNECTED TO RED POWER.