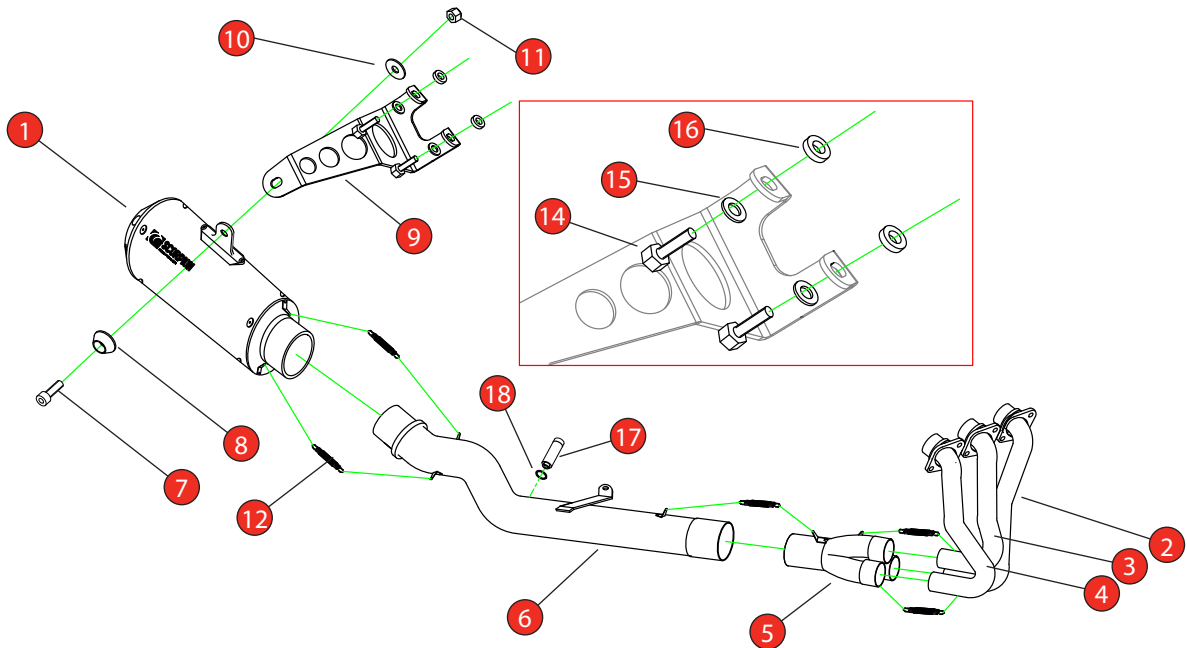


<b>Bike</b>	Yamaha XSR 900 Euro 5+	<b>Part No.</b>	PYA-133-SYS
<b>Year</b>	2024 - Current	<b>Fit Kit</b>	Z039.10754
<b>Notes</b>	Where not supplied use original fittings	<b>dB Killer</b>	SCEXDBK47 (TYPE PB)

Estimated Fitting Time: 60 Minutes



NO.	PART NO.	DESCRIPTION	QTY
1	PSC459	Red Power Silencer	1
2	CP1128	L/H Header Pipe	1
3	CP1129	Centre Header Pipe	1
4	CP1130	R/H Header Pipe	1
5	CP1131	Collector	1
6	CP1132	Connecting Pipe	1
<b>Fit Kit - Z039.10754</b>			
7	Z017.10073	M8 x 25mm Cap Head Bolt	1
8	Z026.20068B	Alloy Bolt Finisher Anodised Black	1
9	Z015.31561	Mounting Bracket	1
10	Z017.10825	M8 x 25mm Washer	1
11	Z017.10062	M8 Nyloc Nut	1
12	Z028.10030	Rubber Coated Spring	5
13	Z024.11134	Lamda Extension Cable (Not shown)	2
14	Z017.10049	M8 x 30mm Hex Bolt	2
15	Z017.10831	M8 x 17mm Washer	2
16	Z026.20049	M8 x 5mm Spacer	2
17	Z026.20185	M12 Lambda Catalyst	1
18	Z017.10728	M12 Copper Washer	1
19	Z017.12732	100 x 1.5mm Black Tie Wrap (not shown)	1

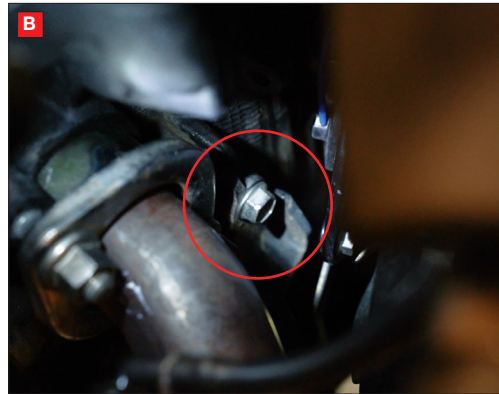
CLASSIFICATION	Closed Circuit Product
HOMOLOGATED	NO
DATE	12/03/2025
ISSUE	00
AUTHORISED	S Shipley

**NOTE:** ENSURE SCORPION SYSTEM IS CLEAN OF MOVING PARTS AND ALL ORIGINAL FUNCTIONS WORK CORRECTLY.



STAY CONNECTED TO RED POWER.

<b>Bike</b>	Yamaha XSR 900 Euro 5+	<b>Part No.</b>	PYA-133-SYS
<b>Year</b>	2024 - Current	<b>Fit Kits</b>	Z039.10754
<b>Notes</b>	Where not supplied use original fittings	<b>dB Killer</b>	SCEXDBK47 (TYPE PB)



NOTE: Instructions show installation of the Serket Parallel system, the Red Power system fits in the same way.

A) Remove both Lambda sensors from the original exhaust.

B) Remove the bolt from the radiator support bracket between the header pipes. This will allow you to move the radiator forward slightly to give better access to the header nuts.



C) Once the bolt is removed pull the pin from the mounting rubber.

D) Remove all 6 header nuts.

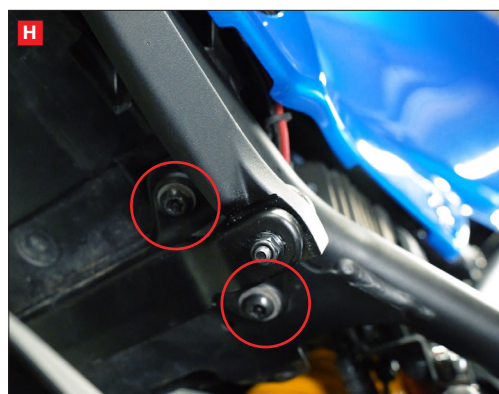
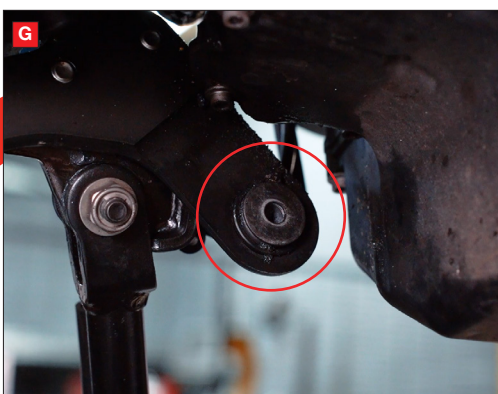
E) On the left hand side of the bike remove the silencer mounting bolt.

F) On the right hand side of the bike, support the weight of the exhaust then remove the silencer mounting bolt. You can now carefully remove the exhaust from the bike.



G) Remove the metal insert and rubber bush from the left hand side of the bike. This mounting isn't used with the Scorpion system.

H) On the right hand side of the bike, behind the rear foot peg, remove the 2 circled bolts, this is where the new mounting bracket will attach.

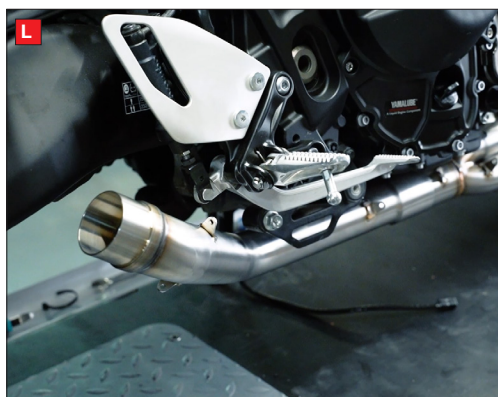
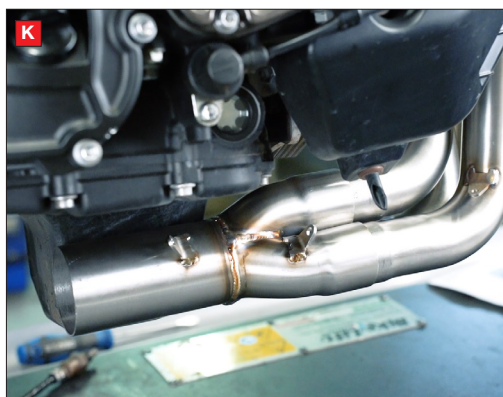


<b>Bike</b>	Yamaha XSR 900 Euro 5+	<b>Part No.</b>	PYA-133-SYS
<b>Year</b>	2024 - Current	<b>Fit Kits</b>	Z039.10754
<b>Notes</b>	Where not supplied use original fittings	<b>dB Killer</b>	SCEXDBK47 (TYPE PB)



I) Using the diagram on the 1st page, install the new mounting bracket with the supplied hardware. Leave the bolts loose to allow adjustment, you will fully tighten them in a later step.

J) Starting from the left loosely fit the scorpion header pipes. Do not fully tighten until the whole system is fitted.



K) Insert the header pipes into the collector.

L) Fit the connecting pipe to the collector. Use the original bolt to secure the pipe to the bike.

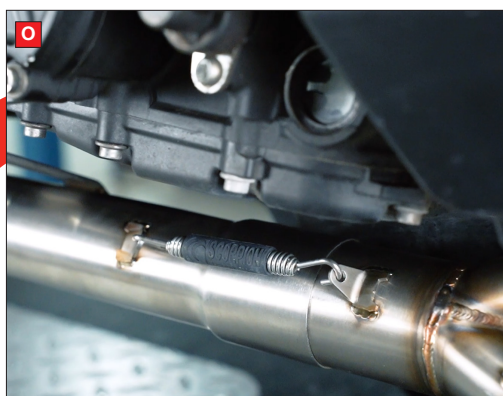
M) Slide the silencer on to the connecting pipe.



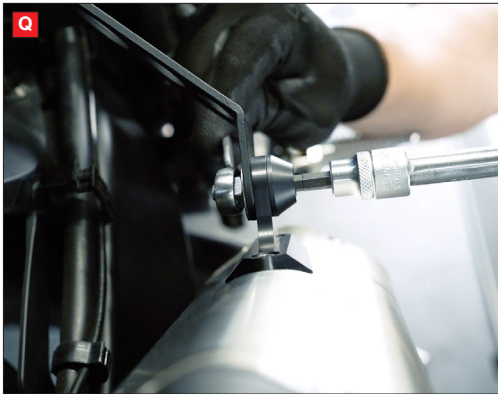
N) Align the silencer and the mounting bracket, then secure in place using the nuts and bolts provided. Leave slightly loose for now, you will fully tighten later.

O) Install all of the supplied springs between the spring hoops.

P) Fully tighten the header nuts.



<b>Bike</b>	Yamaha XSR 900 Euro 5+	<b>Part No.</b>	PYA-133-SYS
<b>Year</b>	2024 - Current	<b>Fit Kits</b>	Z039.10754
<b>Notes</b>	Where not supplied use original fittings	<b>dB Killer</b>	SCEXDBK47 (TYPE PB)



Q) Fully tighten the silencer to mounting bracket bolt.

R) Fully tighten the bolts securing the mounting bracket to the frame.

S) Remove the covers from both sides of the radiator.

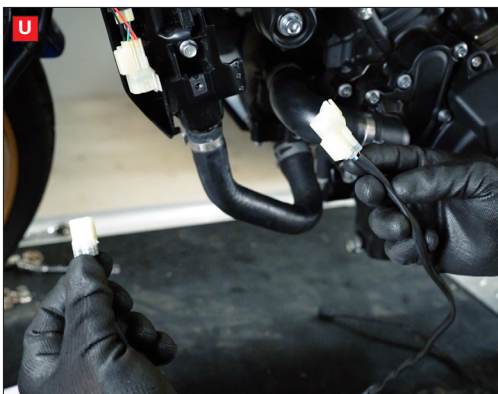
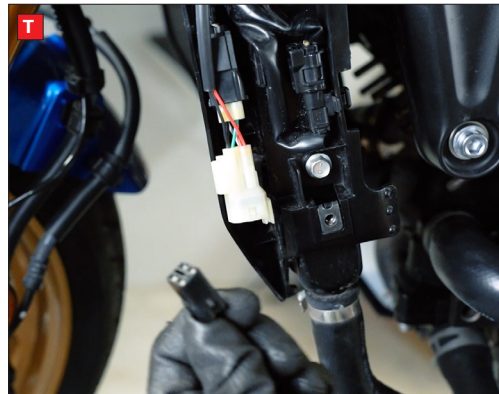
T) There's a Lambda sensor cable on each side, disconnect them from their plugs.

U) On the left side connect the supplied lambda extension cable to the plug.

V) Feed the end of the cable through the gap above the radiator.

W) Run the cable behind the frame and engine mounting.

X) Install the lambda sensor into the front boss on the Scorpion connecting pipe and fully tighten.



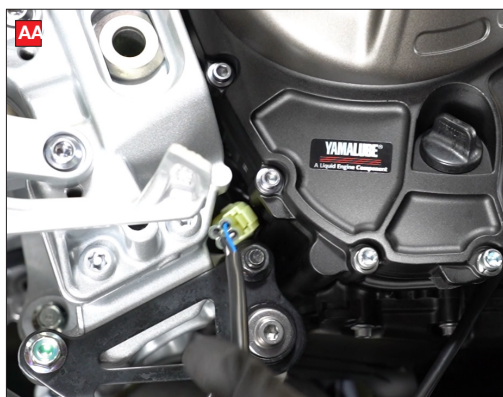
<b>Bike</b>	Yamaha XSR 900 Euro 5+	<b>Part No.</b>	PYA-133-SYS
<b>Year</b>	2024 - Current	<b>Fit Kits</b>	Z039.10754
<b>Notes</b>	Where not supplied use original fittings	<b>dB Killer</b>	SCEXDBK47 (TYPE PB)



Y) Connect the lambda sensor to the extension cable and neatly secure with the breather pipes.

Z) On the right side of the bike connect the Lambda extension cable to the plug next to the radiator and run the cable along the same route as the original.

AA) Feed the female end of the cable between the engine and the swing arm.



AB) Screw the Lambda sensor into the Lambda Catalyst, then screw the Lambda Catalyst into the rear boss on the Scorpion connecting pipe. Use the supplied copper washer and fully tighten the assembly.

AC) Connect the sensor to the extension cable. Secure any excess cable with the supplied cable tie.



AD) Reinstall the radiator side panels.

AE) Reinstall the radiator support bracket.

When fitted take bike for a short ride to ensure all functions are correct. When bike & exhaust are cool enough check all nuts and bolts are still secure.



<b>Bike</b>	Yamaha XSR 900 Euro 5+	<b>Part No.</b>	PYA-133-SYS
<b>Year</b>	2024 - Current	<b>Fit Kits</b>	Z039.10754
<b>Notes</b>	Where not supplied use original fittings	<b>dB Killer</b>	SCEXDBK47 (TYPE PB)



Thank you for purchasing your Scorpion Silencer.

Care of your exhaust: Please refrain from cleaning silencer with heavy solvents or abrasives!

Vielen Dank Für den kauf eines Scorpion Schalldampfers! Pflegehinweis: Bitte verwenden Sie niemals Scheuermittel oder aggressive Reiniger zur Pflege Ihres Auspuffes!

Merci d'avoir choisi un echappement Scorpion.

Entretien de votre silencieux: Ne pas utiliser de solvants ou de produits abrasifs!

Muchas gracias por adquirir un Silencioso Scorpion. Le recomendamos no limpiar el silencioso con productos abrasivos o aquellos que contengan disolventes.



STAY CONNECTED TO RED POWER.